



"Solutions that Make a Difference in Waste Management, MT Makina"

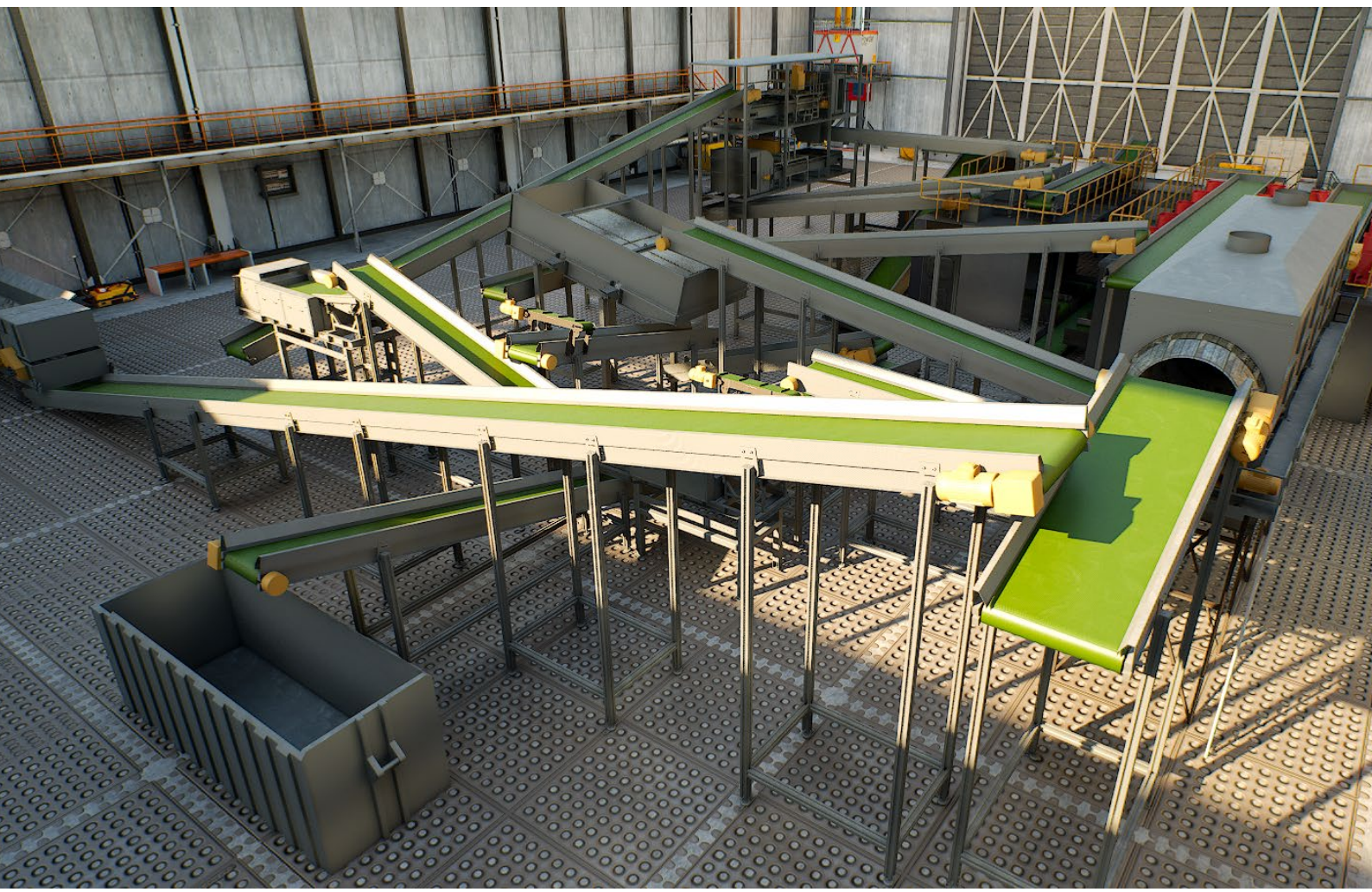
Waste Sorting Plant, Sustainable Waste Management and Recycling Solutions;

Waste sorting plants are facilities where waste is separated into its different components, recyclable materials are brought into the economy and environmental impacts are minimized. These facilities play an important role in waste management, contributing to the protection of natural resources and reducing the amount of waste. Waste sorting facilities are facilities where domestic, commercial and industrial wastes are collected and separated into their components. In these facilities, waste is sorted into different categories such as metal, plastic, glass, paper and organic waste using various methods. These sorted materials are directed to recycling processes or disposed of appropriately.

Municipal solid waste (msw) is collected and brought to waste transfer stations. Large and hazardous materials are manually separated by pre-sorting. Bag opening and shredding machines make waste processing easier. Tromel rotary sieves separate organic and inorganic waste. Magnetic and electromagnetic separators separate ferrous and non-ferrous metals. Optical and ballistic separators precisely separate recyclable materials. The sorted materials are compressed into bales. The sorted materials are stored until they are shipped to the recycling plant.

Advantages of Garbage Sorting Plant;

Effective waste sorting ensures a high recovery rate of recyclable materials. Thanks to the use of advanced technology, cleaner and higher quality recycling materials are obtained. Automated systems and advanced separators ensure that the plant operates with maximum efficiency. Automatic and semi-automatic systems minimize the need for manpower and reduce operating costs.



Fully Automatic Garbage Sorting Plant

It is a facility where waste is separated by automatic systems. It requires minimum human intervention and provides high efficiency.

Semi Automatic Garbage Sorting Plant

It is a facility with both automatic and manual processes. It offers flexible and economical solutions.

Manual Garbage Sorting Plant

It is a plant where waste is sorted manually. Low initial cost, high labor requirement.

High Recovery of Raw Materials

Effective waste segregation ensures a high recovery rate of recyclable materials.

Achieving High Quality Waste

The use of advanced technology results in cleaner and higher quality recycling materials.

Maximum Performance with High Technology

Automated systems and advanced separators ensure that the plant operates at maximum efficiency.

Low Operating and Labor Costs

Automated and semi-automated systems minimize the need for manpower and reduce operating costs.

Productivity

Effective management of the garbage sorting process increases operational efficiency.

Technical Specifications

MODEL	CAPACITY (T/G)
MANUAL GARBAGE SORTING PLANT	1-20
SEMI-AUTOMATIC GARBAGE SORTING PLANT	10-100
AUTOMATIC GARBAGE SORTING PLANT	100-500



Garbage Sorting Plant Performance and Efficiency;

High Recovery Rate

Effective waste segregation ensures a high recovery rate of recyclable materials.

High Quality Waste

The use of advanced technology results in cleaner and higher quality recycling materials.

Maximum Performance

Automated systems and advanced separators ensure that the plant operates at maximum efficiency.

Low Operating Costs

Automated and semi-automated systems minimize the need for manpower and reduce operating costs.



Garbage Sorting Plants in Different Capacities and Budgets;

A fully automatic waste sorting plant is a plant where waste is sorted by automatic systems. It requires minimum human intervention and provides high efficiency. Semi-automatic sorting plant is a plant with both automatic and manual processes. It offers flexible and economical solutions. Manual sorting plant is a plant where waste is sorted manually. Low initial cost, high labor requirement.

Garbage Sorting Plant, Features;

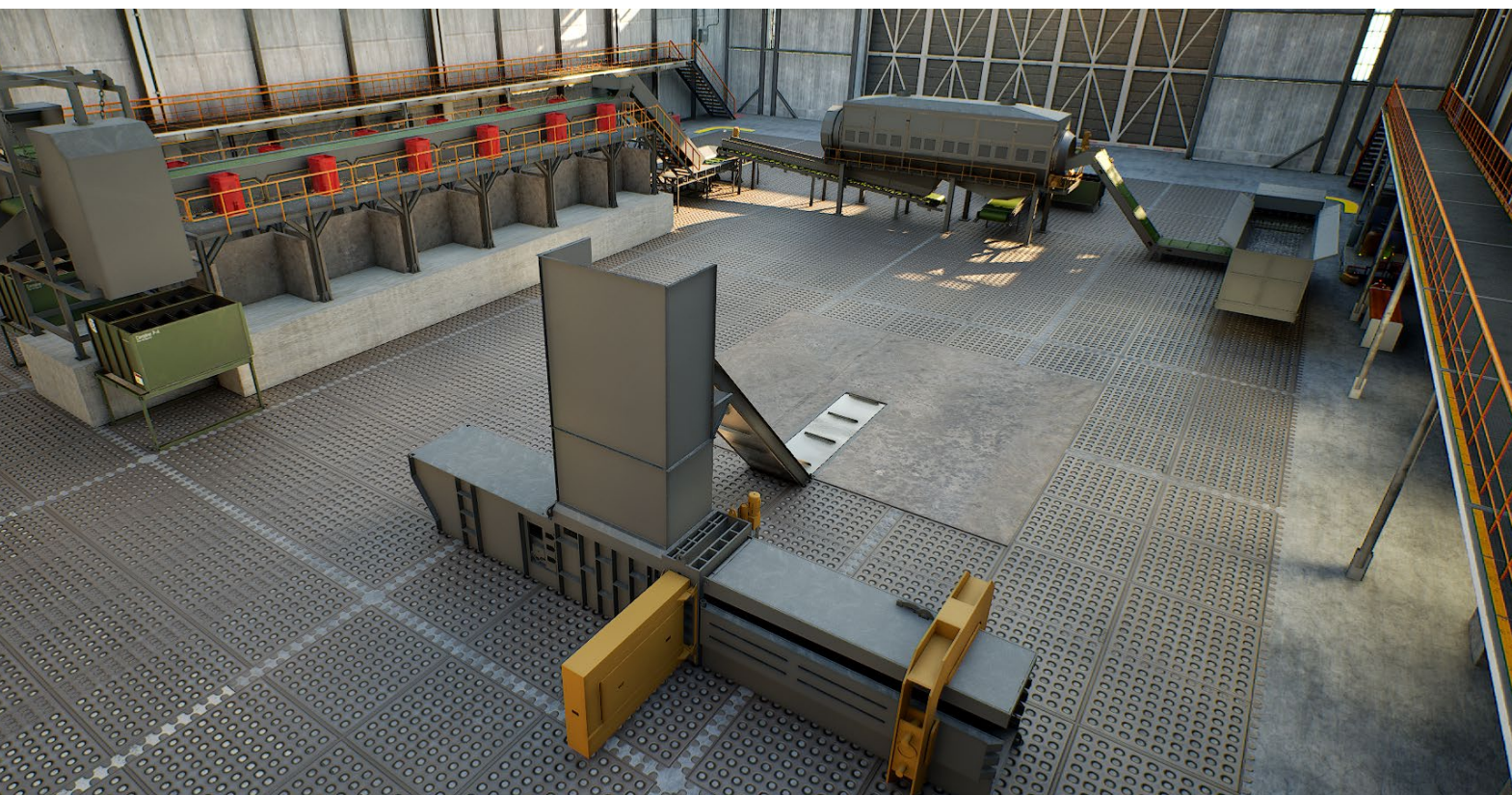
Bag opening machines are machines that open garbage bags automatically. It provides easier processing of waste. Tromel rotary sieve is a rotary sieve system that separates wastes according to their size. It is effective in separating organic and inorganic wastes. Separation platform is the platform where waste is manually separated. It provides flexible working environment. Eddy current separator is a system that separates non-ferrous metals. It provides efficient recovery of metals. Ballistic

separator is a system that separates light and heavy materials. It makes the separation process more efficient. Magnetic metal separator is a system that separates ferrous metals. It enables the recovery of metals. Electromagnetic metal separator separates metals using electromagnetic field. It provides precise metal separation. Optical separator is a system that separates recyclable waste such as plastic, paper and glass. It provides high accuracy and efficiency. Horizontal bale press is a press that compresses recyclable materials into bales. Reduces transportation and storage costs.

The sorting plant provides environmental protection and economic benefits by offering sustainable waste management and recycling solutions. As MT Makina, we optimize sorting processes with our high quality equipment and expert team. You can contact us for solutions suitable for your needs.

OPTIONAL FEATURES

- Manual Garbage Sorting Plant
- Semi Automatic Garbage Sorting Plant
- Automatic Garbage Sorting Plant
- Scada System
- Production in Different Capacities



FREQUENTLY ASKED QUESTIONS (FAQ)

WHAT IS A GARBAGE SORTING PLANT?

Garbage sorting plants are facilities where solid waste is collected and sorted, recyclable materials are brought into the economy and environmental impacts are minimized. These facilities sort waste into categories such as metal, plastic, glass, paper and organic waste by various methods and direct them to recycling processes.

HOW DOES A GARBAGE SORTING PLANT WORK?

The waste sorting plant operates through a process of different stages. Waste is collected from its source and transported to the facility. Large and hazardous materials are separated by hand or machine. The waste is separated into smaller pieces and prepared for sorting. Waste is separated into its constituents using methods such as magnetic separators, optical separators, ballistic separators and manual separation. Recyclable materials are compressed into bales. Sorted materials are temporarily stored until they are shipped to the recycling facility.

WHAT TYPE OF WASTE IS PROCESSED IN A WASTE SORTING PLANT?

Plastic, paper, glass, metal and organic waste. Office waste, packaging materials. Scrap metal, construction waste. Food waste, garden waste.

WHAT EQUIPMENT IS USED IN A GARBAGE SORTING PLANT?

Conveyor belts, bag opening machine, tromel rotary screener, magnetic separator, optical separator, ballistic separator, compaction and baling machines

WHAT IS THE CAPACITY OF THE GARBAGE SORTING PLANT?

The plant capacity varies depending on the amount of waste to be processed and the characteristics of the equipment selected. The capacity can range from 100 tons to 500 tons per day.

HOW LONG DOES IT TAKE TO SORT IN A GARBAGE SORTING PLANT?

The decomposition time varies depending on the amount of waste to be processed and the efficiency of the equipment used. It can usually be completed in a few hours to a few days.

HOW TO ORDER A GARBAGE SORTING PLANT?

Together with the specification and garbage analysis, you can contact MT Makina to get information about the garbage sorting plant solutions suitable for your needs and place an order. We offer customized solutions according to customer demands.

HOW LONG DOES IT TAKE TO INSTALL A GARBAGE SORTING PLANT?

The installation time varies depending on the capacity and characteristics of the plant. It can usually be completed within a few months to a year.

WHAT PERMITS ARE REQUIRED FOR A WASTE SORTING PLANT?

A waste sorting facility requires various environmental and operational permits to operate in accordance with local and national regulations. These permits ensure compliance with legal regulations on waste management and environmental protection.

HOW ARE RECYCLED MATERIALS VALUED IN A WASTE SORTING PLANT?

Recycled materials are shipped to the relevant recycling facility and reused as raw materials. These materials are used as raw materials in the production of new products and brought into the economy.