



"Powerful Shredding Anywhere with Mobile Crusher"

Our TSM and CSM Series Mobile Crushers for universal mobile crusher applications;

Our mobile crushers play an important role in recycling and waste management processes with their capacity to process a wide range of materials, portability and high productivity. Thanks to their robust construction, high performance and user-friendly features, these machines offer a wide range of uses in industrial applications.

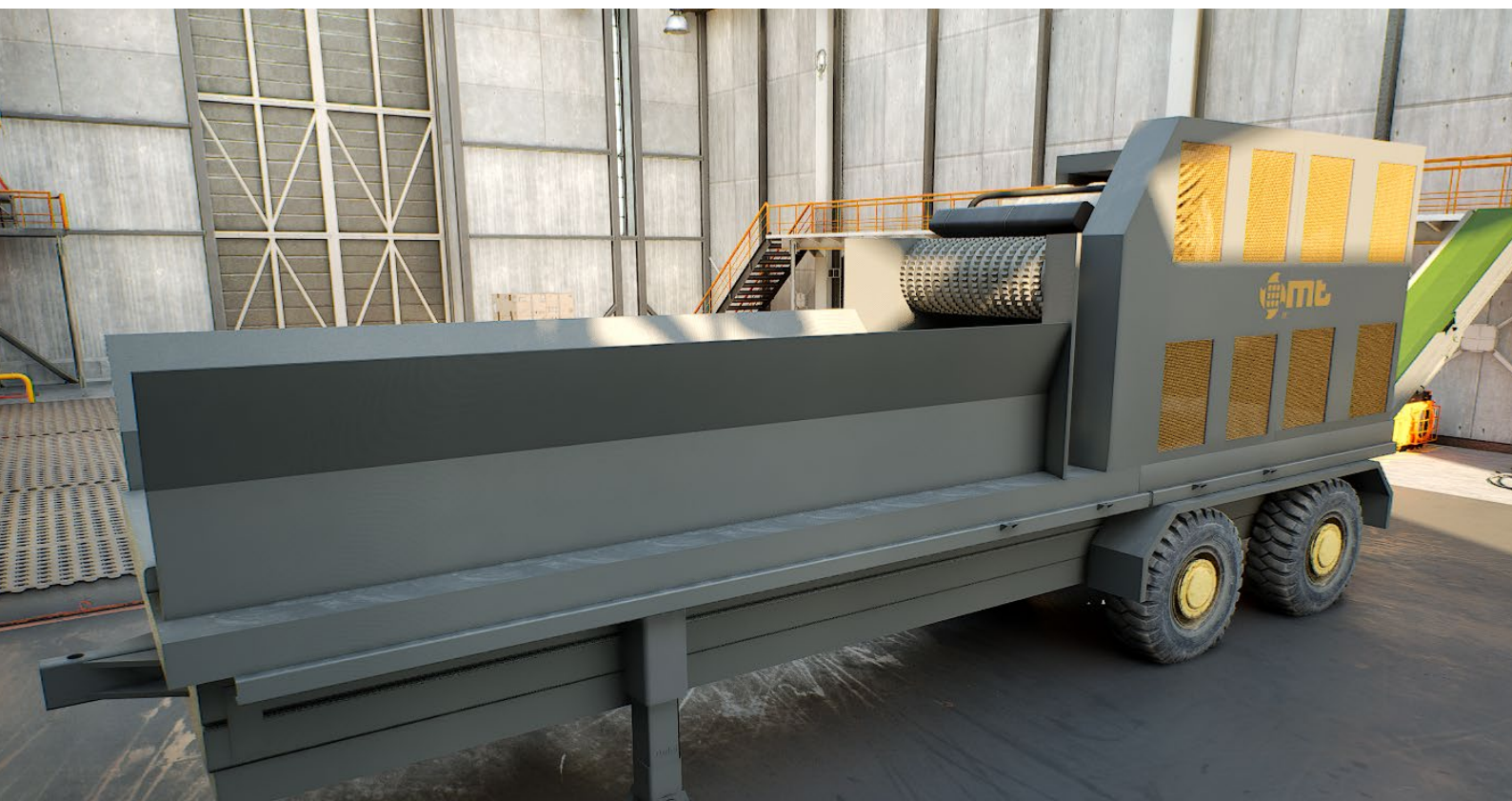
It is used for shredding and preparing recyclable materials such as plastic, metal, wood and paper for the recycling process. Ideal for processing and recycling waste from construction and demolition projects. It shreds materials such as concrete, wood and metal and makes them reusable. It is used for processing municipal waste, household waste and large volumes of waste. These machines ensure efficient processing and

recycling of waste. In agriculture and forest management, it is used to break down plant waste, branches and other organic material. This allows the waste to be used for biomass energy production or composting.

Mobile crushers provide uninterrupted operation with long maintenance intervals, thus reducing operating costs and increasing productivity. Thanks to their mobile nature, they can be easily transported to different sites and crushing can be carried out on-site. The capacity to process a wide range of materials makes these machines suitable for a variety of industries. Blades made of high quality steel provide long-lasting and efficient shredding. The combination of high torque and low speed shreds materials quickly and efficiently. Foldable conveyors facilitate transportation and save space. Uninterrupted operation thanks to easily replaceable cutting blades. User-friendly control panel and simple design make our machines easy to operate.

Advantages of our TSM and CSM Series Mobile Crushers;

The mobile crusher provides effective and fast crushing with a combination of high torque and low speed. This increases productivity while reducing operating costs. Thanks to its mobile nature, the machine can be easily transported to different sites and shredding can be performed on-site. This reduces logistics costs and labor requirements. With the capacity to process a wide range of materials, it is suitable for various industries. Components made from high quality materials ensure a long service life and reliable performance in continuous use. Low energy consumption minimizes environmental impact and reduces operating costs.



Portability

The portable chassis, equipped with heavy-duty wheels or crawler systems, allows the machine to be easily transported to different sites.

Combination of High Torque and Low Speed

This combination provides fast and efficient material shredding and is ideal for difficult and large materials.

Durable Structure

Blades made of high quality steel and a robust chassis ensure the machine is long-lasting and durable.

Foldable Conveyors

Collapsible conveyors provide convenience during transportation.

Fast Blade Change

It works without interruption with easily replaceable cutting blades.

Flexibility

The capacity to handle a variety of materials makes mobile crushers suitable for different industries such as recycling, construction and demolition projects.

Energy Efficiency

Inverter-controlled motors and automatic reversing features increase energy efficiency and reduce operating costs.

Easy to Use

The user-friendly control panel and simple design make the machine easy to operate.

Technical Specifications

MODEL	SHREDDING AREA (MM)	ROTOR LENGTH (MM)	ENGINE POWER (HP)
TSM-150	1500 X 1800	1500	150
TSM-300	3000 X 2000	3000	350
CSM-150	1500 X 1200	1500	150
CSM-200	2000 X 1800	2000	350



TSM and CSM Series Mobile Crusher Performance and Efficiency

Long Maintenance Intervals

Long maintenance intervals allow you to work without interruption, which reduces operating costs and increases productivity.

Environmentally Friendly

Low emission engines operate without harming the environment and minimize environmental pollution with low noise levels thanks to sound insulation.

Diesel Engine Option

Ideal for use in areas where access to electricity is difficult.

Mobile Chassis

The machine is mounted on a portable chassis. It is equipped with heavy-duty wheels or crawler systems, which allows the machine to be easily transported to different sites.



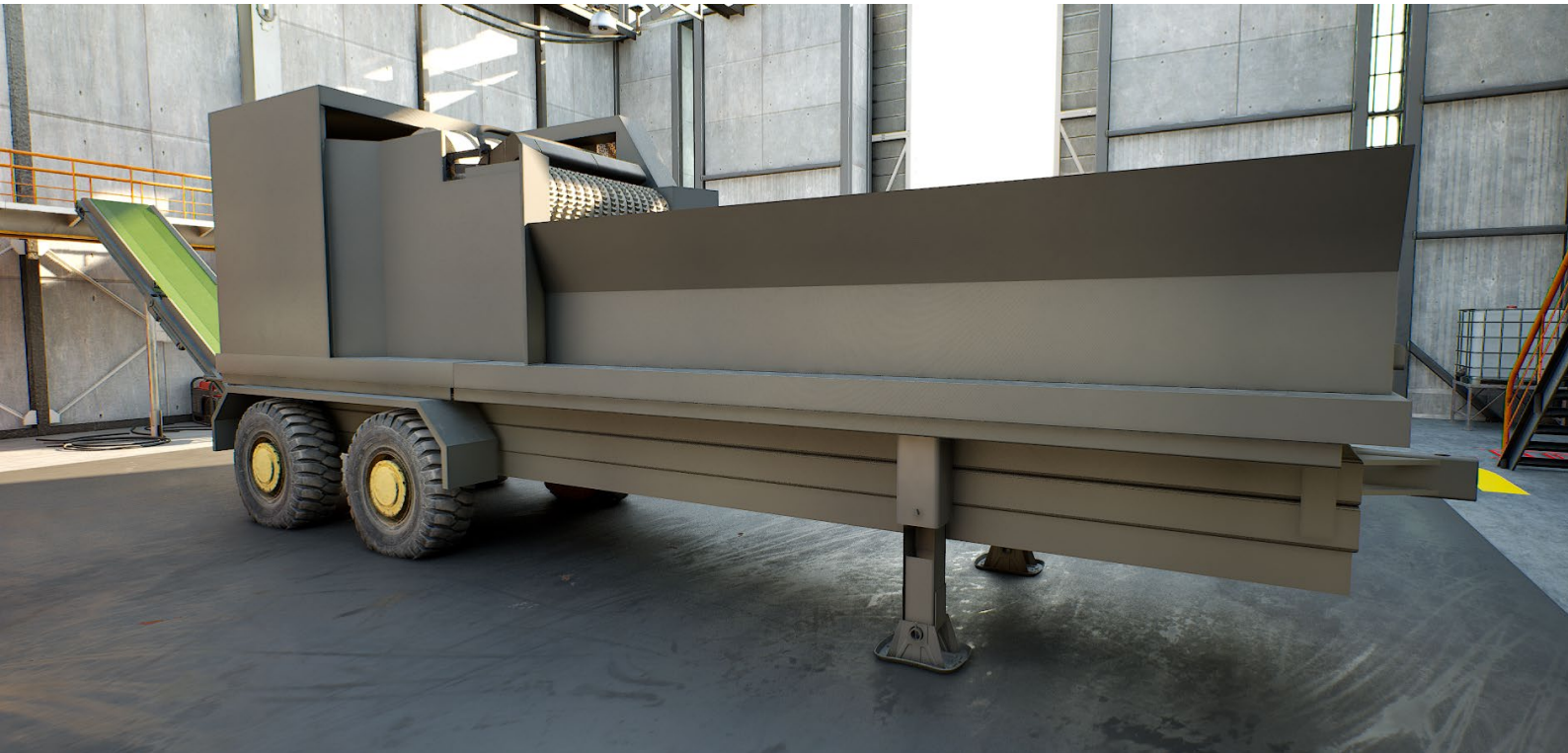
Our TSM and CSM Series Mobile Crushers designed for continuous operation;

Mobile crushers offer portability, flexibility and high productivity, enabling a wide range of applications in various industries. Thanks to their robust construction and user-friendly features, these machines play an important role in recycling and waste management processes. By reducing logistics costs and labor requirements, mobile crushers increase operational efficiency and contribute significantly to sustainable waste management solutions. Mobile crushers will continue to be a critical tool for a cleaner and more sustainable environment in the future.

Optional Features

- Single Shaft and Double Shaft Design
- Rotor Cooling System
- Automatic Lubrication Unit
- Sieves in Different Sizes
- Hydraulic Opening Screen System
- Applications of Folding Conveyor for Exit
- On-Board or Towing Transportation System
- Diesel Engine or Generator Design
- Electric Motorized or Hydromotorized Design

- Wheeled and Tracked System
- Remote Control System
- Hydraulic Opening Screen System
- Applications of Screws, Conveyors and Conveying Fans for Output



FREQUENTLY ASKED QUESTIONS (FAQ)

WHAT MATERIALS CAN THE MOBILE CRUSHER PROCESS?

It can handle a wide range of materials such as plastic, metal, rubber, wood, paper, textiles, electronic waste, construction and demolition waste, household waste, green waste, pallets and bales.

IN WHICH INDUSTRIES IS THE MOBILE CRUSHER USED?

It is used in various industries such as recycling plants, waste management, construction and demolition projects, agriculture, forest management, municipal waste processing plants and industrial waste management.

WHAT ARE THE MAINTENANCE REQUIREMENTS OF THE MOBILE BREAKER?

Low maintenance requirements with long maintenance intervals. Blades and other components must be regularly checked and maintained. Automatic lubrication units and hydraulic opening screen systems reduce maintenance time and costs.

CAN MOBILE CRUSHER BE PRIVATIZED?

Yes, the machine can be customized with various blade configurations, sizes and additional features to suit specific industry requirements and material types.

WHAT IS THE CAPACITY RANGE OF THE MOBILE CRUSHER?

The capacity range varies depending on the model. They are available in various capacities from small-scale operations to large-scale industrial applications.

HOW TO ENSURE ENERGY EFFICIENCY OF THE MOBILE CRUSHER?

Inverter-controlled motors and automatic reversing features improve energy efficiency and optimize the machine's performance. This ensures high productivity while reducing energy consumption.

WHAT ARE THE SECURITY FEATURES OF THE MOBILE BREAKER?

It is equipped with safety measures such as emergency stop buttons, protective coverings and automatic reversing features. These features ensure operator safety.

HOW DOES THE MOBILE BEATER SUPPORT ENVIRONMENTAL SUSTAINABILITY?

Promotes environmental sustainability by facilitating effective waste reduction and recycling. Efficient waste treatment reduces waste volumes and improves recycling processes.

HOW TO TRANSPORT A MOBILE CRUSHER?

Mobile crushers are mounted on a portable chassis equipped with heavy-duty wheels or tracked systems. This feature allows the machine to be easily transported to different sites.

WHAT ARE THE BLADE FEATURES OF THE MOBILE BREAKER?

Made of high quality steel, the blades are abrasion resistant and have a long service life. The blades are easily interchangeable and offer suitable configurations for different materials.

WHAT POWER SOURCES DOES THE MOBILE BREAKER USE?

Diesel engine or generator design options are available. Electric motor and hydro motor designs are also available.

WHAT ARE THE AUTOMATED FUNCTIONS OF THE MOBILE BREAKER?

Automated functions such as automatic return, power shutdown and lubrication systems increase machine efficiency and minimize user intervention.

CAN A MOBILE CRUSHER PROCESS MIXED WASTE?

Yes, mobile crushers can handle mixed waste and efficiently shred various types of materials. This offers a versatile solution for waste management challenges.